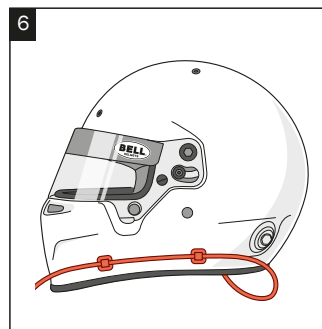
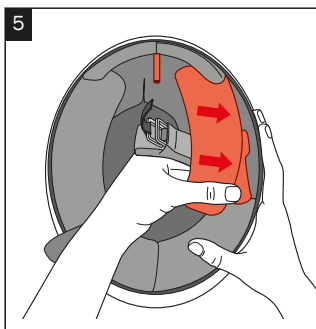
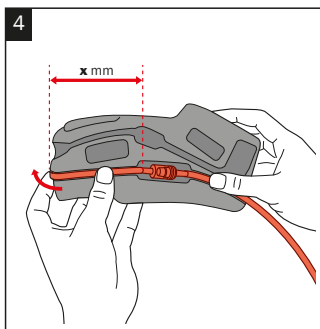
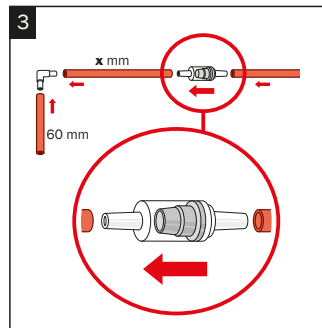
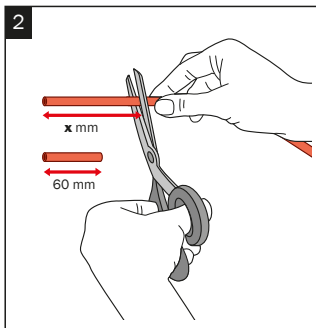
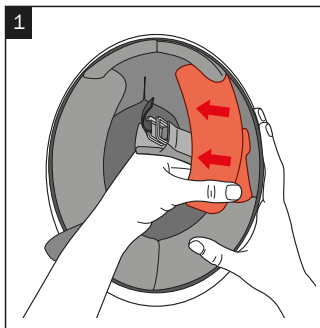


⚠ IMPORTANT.
Read this notice before placing the DRINKING TUBE KIT on your helmet!



1. Remove 1 cheekpad (left or right).
2. Cut off 2 pieces from the drinking tube, 1 at 60 mm and the other one cut after measuring the canal (from the edge of the recess) marked in figure 4 to have the correct **X** mm length.
Note: Please cut 10 mm to the measured length for tolerance.
3. Connect all pieces together in the following order: 60 mm drinking tube, elbow connection, **X** mm drinking tube, valve (make sure the arrow is pointed to the **X** mm tube, rest of the drinking tube).
4. Place the drinking tube in the cheekpad. There is a preserved canal on the lower part.
5. Place the cheekpad back to its original position.
6. If needed you can use the clips to attach the drinking tube on the outside of the helmet.