



SERIOUS HEAD PROTECTION

! IMPORTANT.

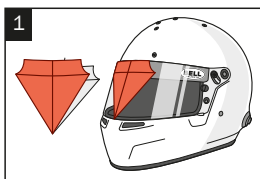
Read this notice before placing the DOUBLE SCREEN ANTI FOG on your helmet!

**Not recommended for drivers with astigmatism.
Product may increase glare when used at night!**

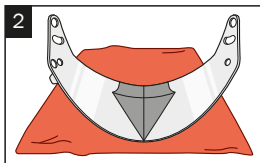
The Double Screen Anti Fog visor (DSAF) Insert incorporates advanced anti-fog coating imbedded into the optically clear 20 mil polycarbonate material for outstanding performance. The insert provides UV protection absorbing the majority of harmful UV rays, is easy to install without damaging the shield and is effective at limiting shield fogging in high temperature / high humidity conditions. The DSAF insert should last for the normal life of your helmet visor.

**ATTENTION:
DOUBLE SCREEN ANTI FOG is compatible with all helmet sizes.**

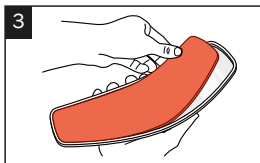
Preparation: Choose a cool, dry and dust-free place for installation. Thoroughly clean and dry the inside of your helmet face shield per Bell's instructions. Remove all fingerprints, grease residues, dirt and moisture.



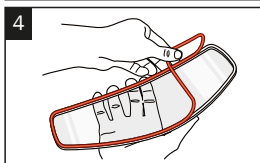
1. Remove the clear vinyl Installation Template with black location lines from its liner. With your helmet face shield down and fully closed, center the clear vinyl Installation Template on the outside of the face shield (most Bell shields already have a center line marking at the top of the shield). The top horizontal black line of the Installation Template should align with the top edge of the shield and the pointed portion of the Installation Template should face downward toward the bottom edge of the shield. Note: you may have to remove the visor strip to assure proper placement.



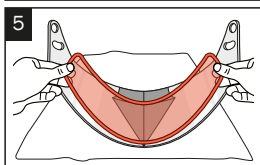
2. Remove the face shield from the helmet. Set it down on a soft surface.



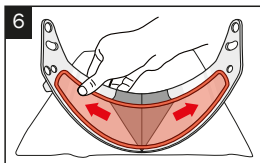
3. Remove the inner protector and clean softly the inside of the DSAF insert with a microfiber cloth to remove eventual dust particle.



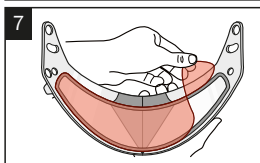
4. Remove the liner or masking from the perimeter adhesive on the DSAF insert. Avoid touching the adhesive with your fingers.



5. With the adhesive side facing down toward the inside of the shield, hold the DSAF insert by its outer edges and bend into a "U" shape. Align the centerline of the insert with the black vertical centerline of the clear vinyl Installation sheet while aligning the top edge of the DSAF insert with the second horizontal black line of the Installation Template. When correctly positioned, gently apply the DSAF insert to your face shield beginning from the center and going out, until the entire insert is attached to the face shield. Note: Avoid repositioning the insert after making contact with the face shield; this will reduce the performance of the adhesive.



6. Once the insert is in place, apply firm pressure along the adhesive gasket from the middle outwards. A small airspace between the interior surfaces of the face shield and insert can be expected. Remove the clear vinyl Installation Template from the outside of the face shield and discard.



7. Carefully remove the plastic protective liner (thin, clear film) of the DSAF insert from the outside surface and discard. We recommend allowing eight (8) hours for the adhesive to set before reinstalling the face shield on the helmet.

Maintenance: Clean residue build-up with warm water and soap or for stubborn residues clean with a household glass cleaner. Do not use cleaners with abrasives or caustics.

NOTE

It is your responsibility to determine the suitability of this product for its intended use, and you use this product at your own risk. If at any time you believe the DSAF insert is not performing properly (for example, the insert may not perform properly in subfreezing temperatures), remove the insert at once.